

[NGN]

ITU-SG11.Q7

NGN

ITU-T SG11.Q7

IEEE IETF

IEEE 802

802.11 802.16

IEEE

802.11 WEP(Wired Equivalent Privacy)

WEP

CRC

IEEE 2001

802.1X

supplicant

authenticator

EAPOL

authenticator

RADIUS

2004

802.11i

AP가

station

IEEE 802.1X

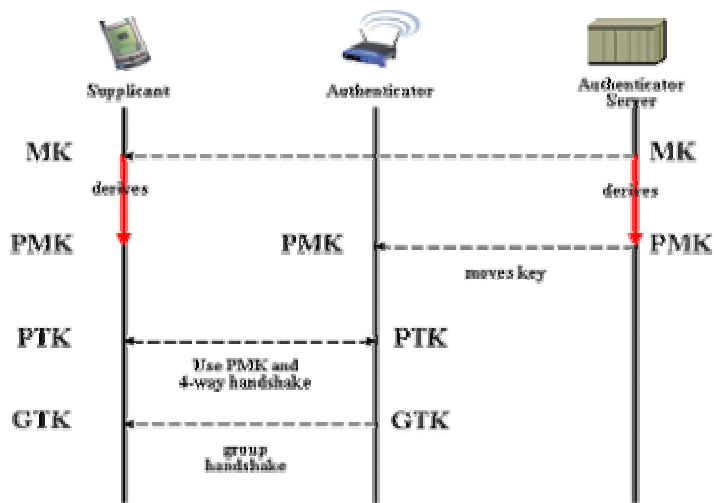
4-Way Handshake

CCMP(Counter mode with CBC-

MAC Protocol)

WEP

Temporary Key Integrity Protocol(TKIP)



IEEE 802.11i AP 가

IEEE 80211 TGr station

IETF PANA(Protocol for carrying Authentication for Network Access) PANA

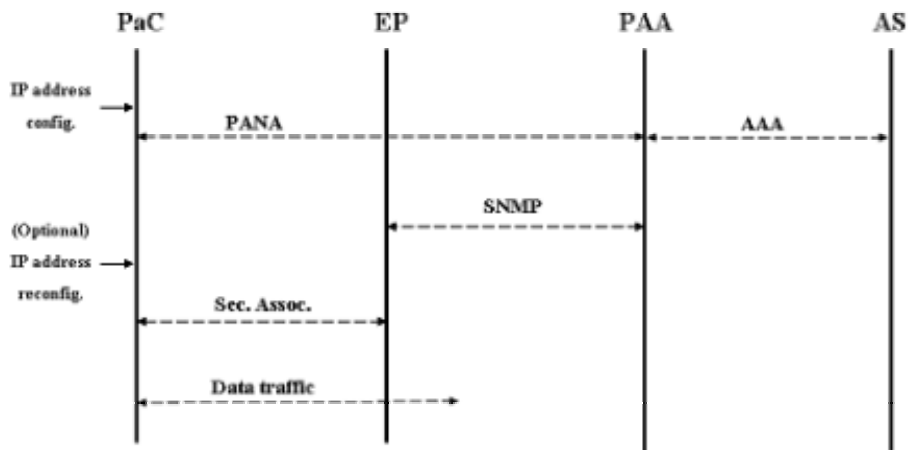
IP

2 PANA

PaC (PANA client)가 IP IP
가 , PaC가 PAA (PANA authentication agent)

, IP 가 EP(Enforcement Point) IP
. PANA WG

RFC 4016 4058 2



< 2> PANA

IETF EAP(Extensible Authentication Protocol) AAA(Authentication, Authorization and Accounting) EAP WG

EAP

EAP

method 가 64 IETF

EAP method EMU(EAP Method Update) BOF가

AAA WG authenticator Diameter
. Diameter Mobile IPv4 network access server EAP
가 Diameter API SIP
가

AKA (Authentication and Key Agreement) 3GPP (3 Generation
Partnership Project) 3 UMTS (Universal Mobile
Telecommunications System) . AKA
UMTS

가 NGN
NGN
SG11.Q7

(, souhwanj@ssu.ac.kr)